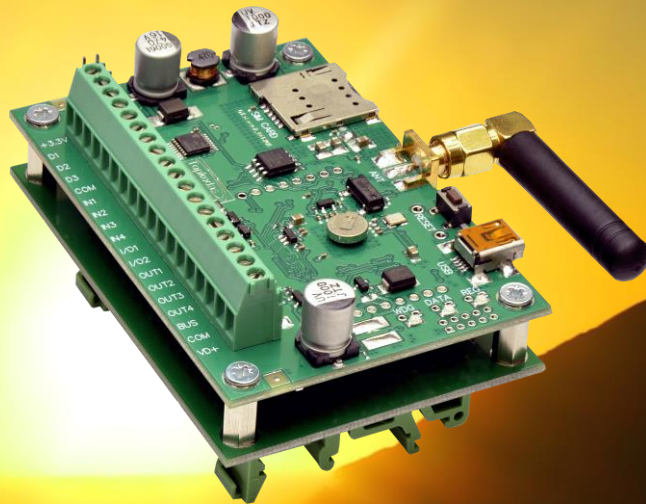
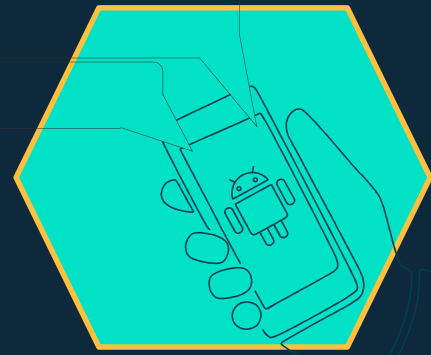


GSM automation, alarm, control, monitoring

BE FREE!





Automatic critical control point temperature detection.



Alarms when the temperature is lower or higher than set.



24/7 remote monitoring.



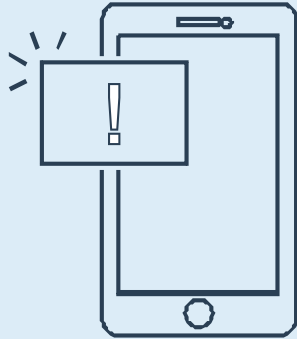
Event list.



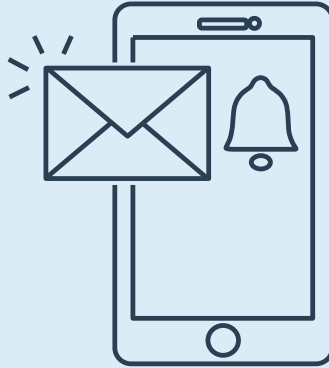
Saving energy.



App notifications



SMS alarms



Event list





Heating automation:

if the temperature is below T_1 , start heating up to T_2 .

Heating control via mobile phone

from anywhere in the world.





Comfort
zone



Alarms to your
mobile phone

Heating OFF

Heating ON



When the controller is switched on, the output is activated, (heating starts), because the temperature is out of range.

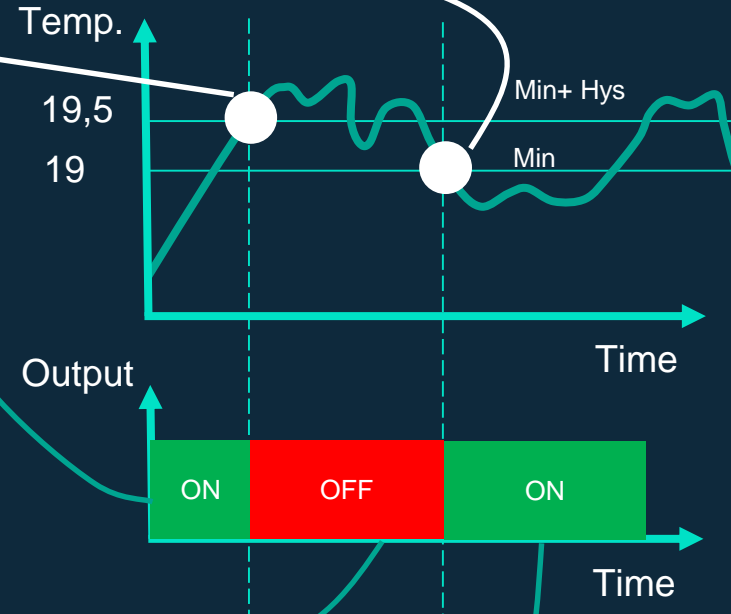
Temperatures are rising.



When the temperature reaches 19.5°C ($19.0 + 0.5$) it enters the range (trigger condition)

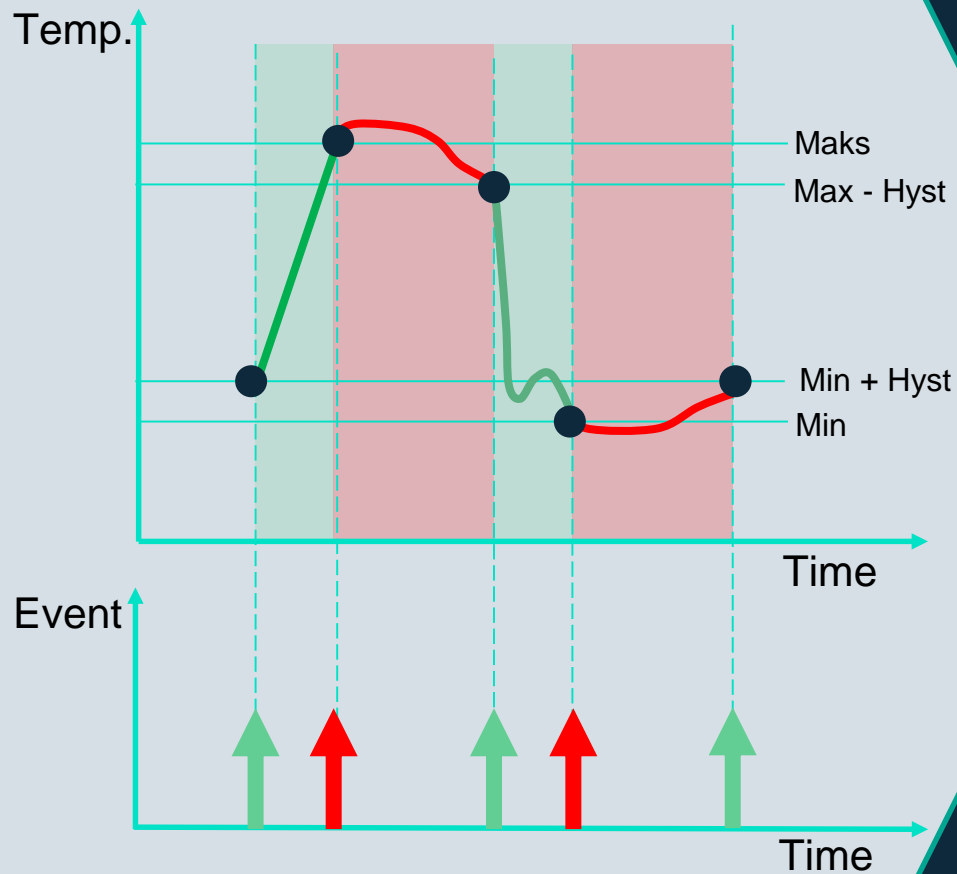
The heater switches OFF. Output is OFF

Temperatures continue to drop when they reach 19°C , it goes out of range (trigger conditions)

The output is activated (the heater is switched on).



 In range
 Out of range





For more information email:

info@topkondas.it

<https://www.topkondas.it>

